



NAPCO SECURITY TECHNOLOGIES, INC.
333 Bayview Avenue, Amityville, New York, U.S.A. 11701
800-645-9445 (631) 842-9400 FAX (631) 842-9137

Note: Technical Service is for dealer professionals only



Tech Tip

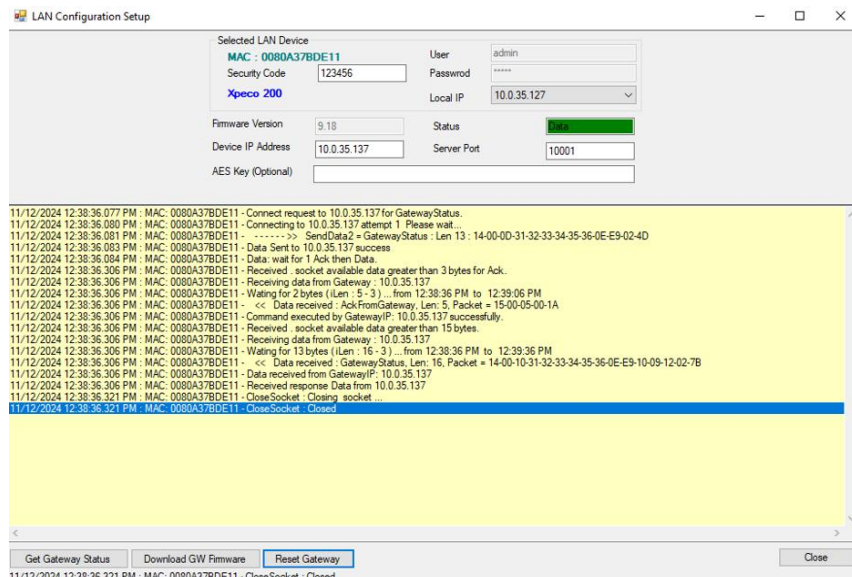
Date: July 11, 2025
Subject: How to convert a GEN3 Gateway using uniVerse Finder Utility Software to MVP Access?

Models: AL-IM3-80211 & AL-IM3-POE

ANSWER:

Important: Only GEN3 Gateways are eligible for conversion to MVP Access. The uniVerse Finder Utility Software must be installed on the same local area network as the gateway.

Warning! After performing the firmware update or factory reset on the gateway, any locks or Net Panels connected to the gateway will only be removed from the gateway's configuration table. All existing data will remain stored on the lock or panel until it is physically reset and rediscovered through MVP Access.



1. Go to tech.napcosecurity.com
2. Navigate to **Software Downloads > Napco Access Pro** and download the (**LATEST**) [uniVerse Finder Utility Software](#).
3. After downloading uniVerse Finder Utility, right-click the downloaded zip file and select **"Extract All"** to a local folder of your choosing.
4. Inside the uniVerse Finder Utility folder, right-click the file named **RegisterAES.bat** and click **"Run as Administrator."** (If prompted click **More Info** and press **Run Anyway**)
5. Then, right-click the file named **uniVerseFinder.exe** and click **"Run as Administrator."** (If prompted click **More Info** and press **Run Anyway**)
6. Select **"Other Devices,"** then press **Discover**.
7. Search for the gateway **MAC Address** from the discovered list. (The MAC Address is normally located on a sticker on the bottom of the gateway). Select the gateway and click **Setup**.
8. In the **Security Code** field enter the "Set Security Password" that was used when adding the gateway through DL-Windows or CA4K, then click **Get Gateway Status**. The status will show as **Green** if the security code is correct. (If the gateway is new, leave the password blank)

Note: If you don't remember this password, you can perform a factory reset on the gateway. This will allow you to leave the Security Code field blank to **Get Gateway Status**. To factory reset the gateway, press and hold the **Reset** button, until the **Red** and **Yellow** LED, both turn on solid, then release the Reset button. When complete, the Green LED will rapidly flicker.

9. Once the status shows **Green**, for Data connection ok, press **Download GW Firmware** and select **Yes** to begin the firmware conversion. When completed the software will read **"Cloud hosting firmware has been successfully downloaded to the gateway."**
10. **Your gateway is now MVP Access Cloud Ready!** (**Rapid Green LED:** Ready for MVP discovery, **Slow Flashing Green LED:** MAC Address already added to MVP Access or needs reset)
11. Using mvpaccess.online, you can now add your Wireless Gateway MAC Address under **Configuration > Com Ports**. For initial setup please refer to the [Wireless Locks & Net Panel – MVP Access Getting Started Guide - WI2802](#).